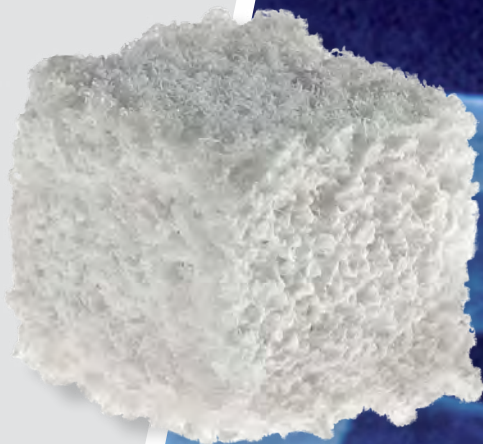


Geistlich  
**Bio-Oss** Collagen®

# The Master's Choice

Application and Handling Benefits



**LEADING REGENERATION**

# Geistlich – leading regeneration

## Geistlich is the world leader in regenerative dentistry.<sup>1,2</sup>

We transform natural biomaterials into safe and reliable treatment methods that recreate lost structures. Our family of products connect regenerative professionals and patients around the world. At the core of this connection is trust.

It is this trust and an innovative spirit at Geistlich that create a unique environment for developing evidence-based treatment solutions. For 160 years, our family-owned Swiss company has pioneered the technological advances that make regenerative treatment with natural biomaterials the preferred choice for clinical predictability.

Today, Geistlich continues this spirit of innovation and scientific collaboration in North America.



## Geistlich Bio-Oss Collagen® The Master's Choice in application and handling

Geistlich Bio-Oss Collagen® consists of Geistlich Bio-Oss® cancellous bone granules with the addition of 10% highly purified porcine collagen. With enhanced handling characteristics, Geistlich Bio-Oss Collagen® delivers predictable results.<sup>3, 4, 5, 6</sup> The combination of Geistlich Bio-Oss Collagen® and Geistlich Bio-Gide® has the capacity to induce regeneration of the periodontal attachment apparatus when placed in intrabony defects.<sup>6</sup>

### 10% Collagen = Versatility

Geistlich Bio-Oss Collagen® can be used in all bone augmentation and periodontal indications. With its impressive handling characteristics and ability to tailor the material to the morphology of the defect, Geistlich Bio-Oss Collagen® is increasingly used in the treatment of extraction sockets (ridge preservation).<sup>3</sup>

For specific clinical indications where barrier function is needed, Geistlich Bio-Gide® is a natural companion to Geistlich Bio-Oss Collagen®.\*

\* Additional information regarding indications for Geistlich Bio-Oss®, Geistlich Bio-Oss Collagen® and Geistlich Bio-Gide® can be found on the back panel of this brochure.

Geistlich Bio-Oss Collagen®  
and Geistlich Bio-Gide® used in  
combination for ridge preservation.



#### References:

- 1 Data Research Inc., US Dental Bone Graft Substitutes and other Biomaterials Market, 2011.
- 2 Data Research Inc., European Dental Bone Graft Substitutes and other Biomaterials Market, 2010.
- 3 Jung RE et al., Postextraction tissue management: a soft tissue punch technique, *Int J Periodontics Restorative Dent* 2004;24:545-553.
- 4 Araujo M.G. et al., Dynamics of Geistlich Bio-Oss Collagen® incorporation in fresh extraction wounds: an experimental study in the dog, *Clin Oral Implants Res* 2010;21(1):55-64.
- 5 Nevins ML et al., Three-dimensional micro computed tomographic evaluation of periodontal regeneration: a human report of intrabony defects treated with BOC, *Int J Periodontics Restorative Dent* 2005;25:365-373.
- 6 Nevins ML et al., Evaluation of perio regeneration following grafting intrabony defects with Bio-Oss Collagen®: a human histologic report, *Int J Periodontics Restorative Dent* 2003;23:9-17.

## Geistlich Bio-Oss Collagen® in extraction sockets



Following atraumatic tooth extraction, a large-volume socket is apparent with loss of the buccal wall.



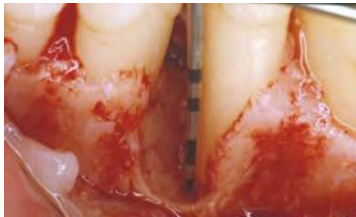
To preserve the three-dimensional volume (mucosal support), Geistlich Bio-Oss Collagen® is inserted in block form.



Application of Geistlich Bio-Oss Collagen® is simplified due to the material's characteristics (case: Dr. KL Ackermann, Filderstadt, Germany).

Individual results may vary.

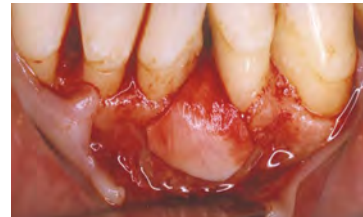
## Geistlich Bio-Oss Collagen® in periodontal defects



Intraoperative view of the bony defect.



Filling the defect with Geistlich Bio-Oss Collagen® is made easy due to handling characteristics that allow the bone matrix to remain stable in the defect.



Geistlich Bio-Gide® is applied over the defect to provide adequate barrier function (case: Prof. Dr. S. Hägewald / Dr. J. P. Bernimoulin, Berlin).

## Clinical benefits of Geistlich Bio-Oss Collagen®

- 90% of Geistlich Bio-Oss Collagen® consists of Geistlich Bio-Oss® granules – the most documented oral bone substitute with hundreds of publications
- Promotes bone regeneration which results in good soft tissue esthetics<sup>3</sup>
- Volume stability of the augmented tissue through slow resorption<sup>4</sup>
- Significant clinical improvement of pocket depth (PD) and clinical attachment level (CAL)<sup>5</sup>
- Regeneration of the complete periodontium as demonstrated in human histology<sup>6</sup>

Geistlich Bio-Oss Collagen® – The Master's Choice



**DOCUMENTED:** More than 700 publications  
**RELIABLE:** More than 25 years of clinical experience  
**EXPERIENCED:** 160 years of Geistlich collagen competence



**Geistlich Bio-Oss Collagen®**  
 Geistlich Bio-Oss® (small granules)  
 + 10 % collagen (porcine)

Sizes: 100 mg (0.2–0.3 cc), 250 mg (0.4–0.5 cc), 500 mg (0.8–1.2 cc)  
 Consists of Geistlich Bio-Oss® cancellous bone granules with the addition of 10% highly purified porcine collagen. The combination offers enhanced handling and ease of application.



**Geistlich Bio-Oss®**  
 Small granules (0.25 – 1 mm)

Quantities: 0.25 g, 0.5 g, 2 g, 5 g (1 g ≈ 2 cc)  
 The small Geistlich Bio-Oss® particles allow close contact with the surrounding bony walls. They are recommended for smaller 1–2 socket defects and for contouring autogenous block grafts.



**Geistlich Bio-Oss®**  
 Large granules (1–2 mm)

Quantities: 0.5 g, 2 g (1 g ≈ 3 cc)  
 The large Geistlich Bio-Oss® granules offer more volume and are ideal for the regeneration of larger defects such as ridge augmentation.



**Geistlich Bio-Gide®**  
 Resorbable bilayer collagen membrane

13 mm x 25 mm, 25 mm x 25 mm, 40 mm x 50 mm  
 Consists of porcine collagen and has a bilayer structure – a rough side that faces the bone tissue to be regenerated and a smooth side that faces the soft tissue. Geistlich Bio-Gide® is easy to handle: it can be positioned easily, adheres well to the defect, and is resistant to tension and tearing.

Geistlich Bio-Oss®  
 and Geistlich Bio-Gide®  
 available directly from  
 Geistlich Pharma North America

**Customer Care**  
**Toll-free 855-799-5500**

[www.GeistlichOnline.com](http://www.GeistlichOnline.com)  
[www.biooss-na.com](http://www.biooss-na.com)  
[www.biogide-na.com](http://www.biogide-na.com)

**Geistlich Pharma North America, Inc.**  
 202 Carnegie Center • Princeton, NJ 08540

**CAUTION:** Federal law restricts these devices to sale by or on the order of a dentist or physician.

**Indications:**

Geistlich Bio-Oss® and Geistlich Bio-Oss Collagen® are indicated for the following uses: Augmentation or reconstructive treatment of the alveolar ridge; Filling of periodontal defects; Filling of defects after root resection, apicoectomy, and cystectomy; Filling of extraction sockets to enhance preservation of the alveolar ridge; Elevation of the maxillary sinus floor; Filling of periodontal defects in conjunction with products intended for Guided Tissue Regeneration (GTR) and Guided Bone Regeneration (GBR); and Filling of peri-implant defects in conjunction with products intended for GBR.

**Warnings:**

Possible complications which may occur with any surgery include swelling at the surgical site, flap sloughing, bleeding, local inflammation, bone loss, infection or pain. As Geistlich Bio-Oss Collagen® contains collagen, in very rare circumstances cases of allergic reactions may occur.

**Indications:**

Geistlich Bio-Gide® is indicated for the following uses: Augmentation around implants placed in immediate and delayed extraction sockets; Localized ridge augmentation for later implantation; Alveolar ridge reconstruction for prosthetic treatment; Filling of bone defects after root resection, cystectomy, removal of retained teeth; GBR in dehiscence defects; and GTR procedures in periodontal defects.

**Warnings:**

As it is a collagen product, allergic reactions may not be totally excluded. Possible complications which may occur with any surgery include swelling at the surgical site, flap sloughing, bleeding, dehiscence, hematoma, increased sensitivity and pain, bone loss, redness, and local inflammation.

For more information on contraindications, precautions, and directions for use, please refer to the Geistlich Bio-Oss®, Geistlich Bio-Oss Collagen®, and Geistlich Bio-Gide® Instructions for Use at: [www.geistlich-na.com/ifu](http://www.geistlich-na.com/ifu)